

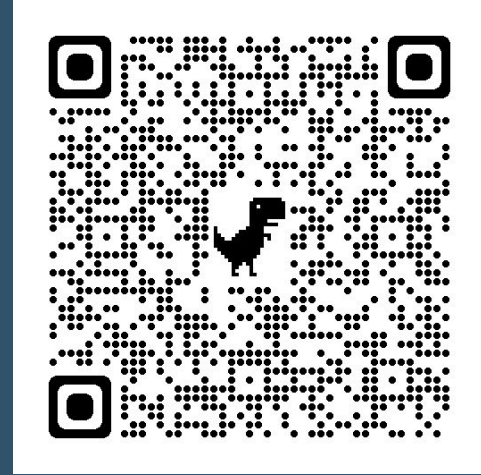


Welcome!

We're so glad you're here!
We will begin at 6:05pm.

The webinar will be recorded until about 7pm, until we begin our Q&A / Networking session

Fill out this google form (QR code/link in the chat) to enter the giveaway.

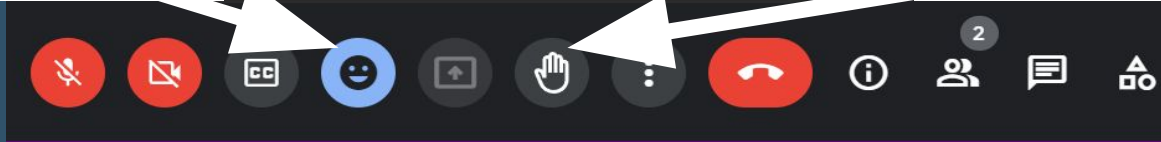


Please save questions until the end!

You can select this button to be able choose emojis to react with



Raise your hand with this button to be noticed and called on





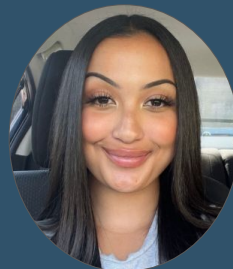
2023 - 2024 Board



President
Karli Kooi



Vice President
Leonardo Rios



Secretary
Laila Haughton



Treasurer
Kayla Moran



Director West
Kharen Lansang



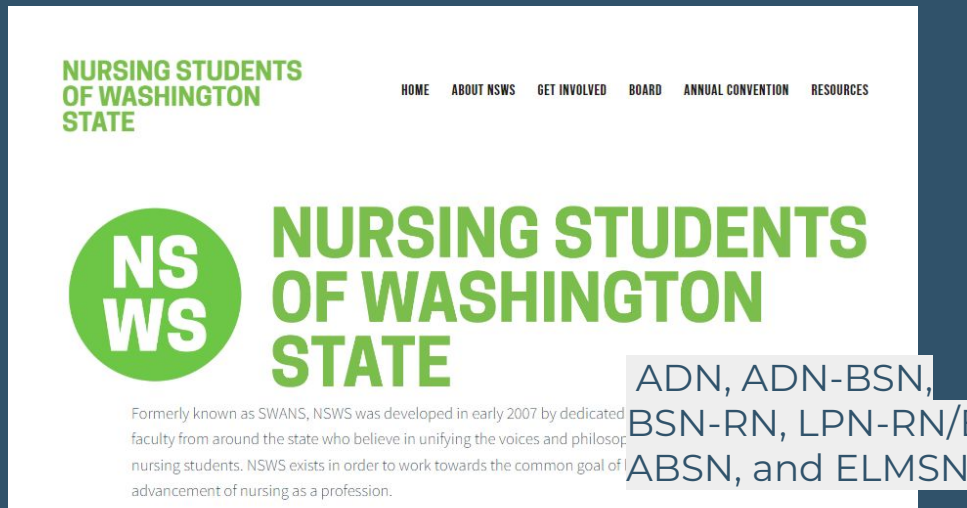
State Consultant
Megan Kilpatrick



State Consultant
Dr. Wendy Blakely



About NSWS



Website: nsws.org

Instagram: [@nsws_wa](https://www.instagram.com/nsws_wa)

FB: Nursing Students of Washington State

- Officially represent all WA student nurses seeking RN or Baccalaureate in Nursing
- All welcome! pre-nursing, LPNs, CNAs, faculty, leaders, etc.

CHECK OUT THE SCHOLARSHIP PAGE!!!

NSNA History - Video

Not for Ourselves but Others – NSNA 2002

- <https://www.youtube.com/watch?v=9ICGIWSHjQA>
 - Birth of NSNA , Atlantic City, June 1952 (0:17 - 3:47)
 - Change to Current NSNA Structure and Purpose – 1974-1975 (20:37 - 25:16)



Membership Giveaways

2x one year memberships to 2 individuals
(not yet NSNA members)



Winners Please Send:

Your Name:

Preferred Email:

Snail Mail (Residence) Address:

Mobile Phone #:

Anticipated Year of Graduation:

Birth Date:

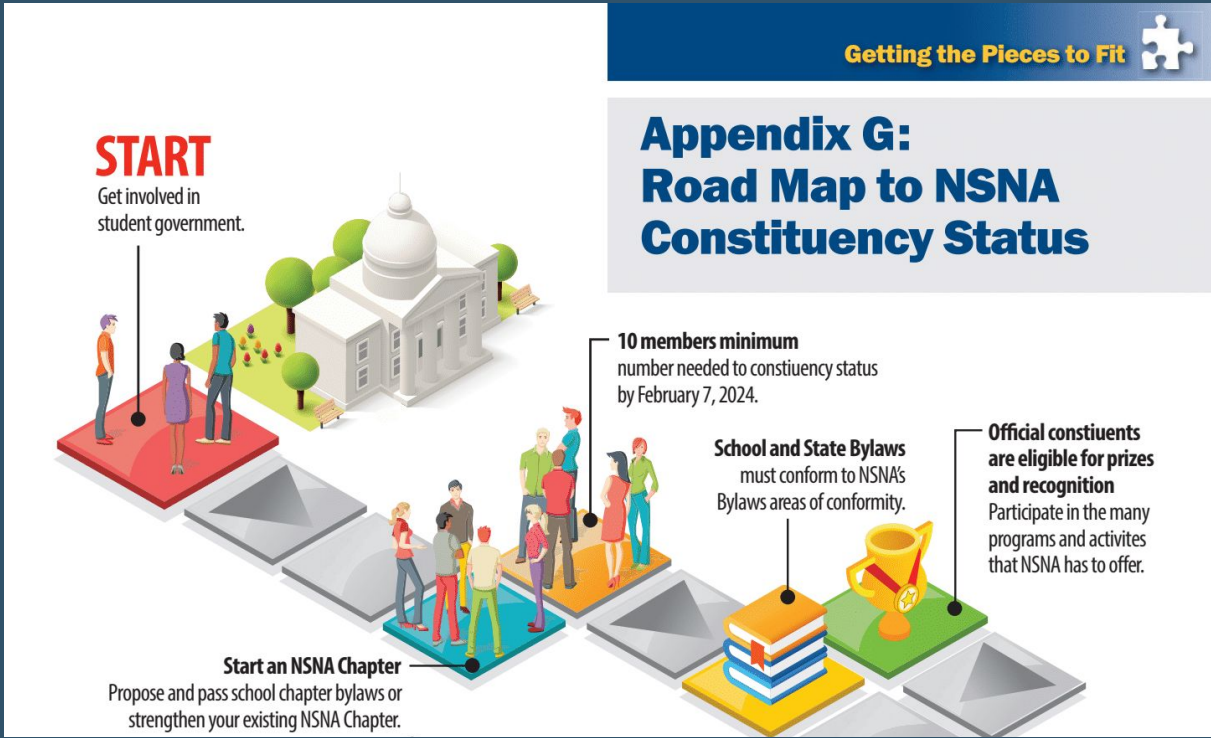
TO: **Wendy Blakely** (blakely_w@heritage.edu)



How to Begin a School Chapter

Getting the Pieces to Fit 

Appendix G: Road Map to NSNA Constituency Status



- Have a Nursing Club/Organization
- 10 NSNA members
- Update/Create Rules/bylaws/etc to conform to NSNA bylaws
- Register to be an official constituent



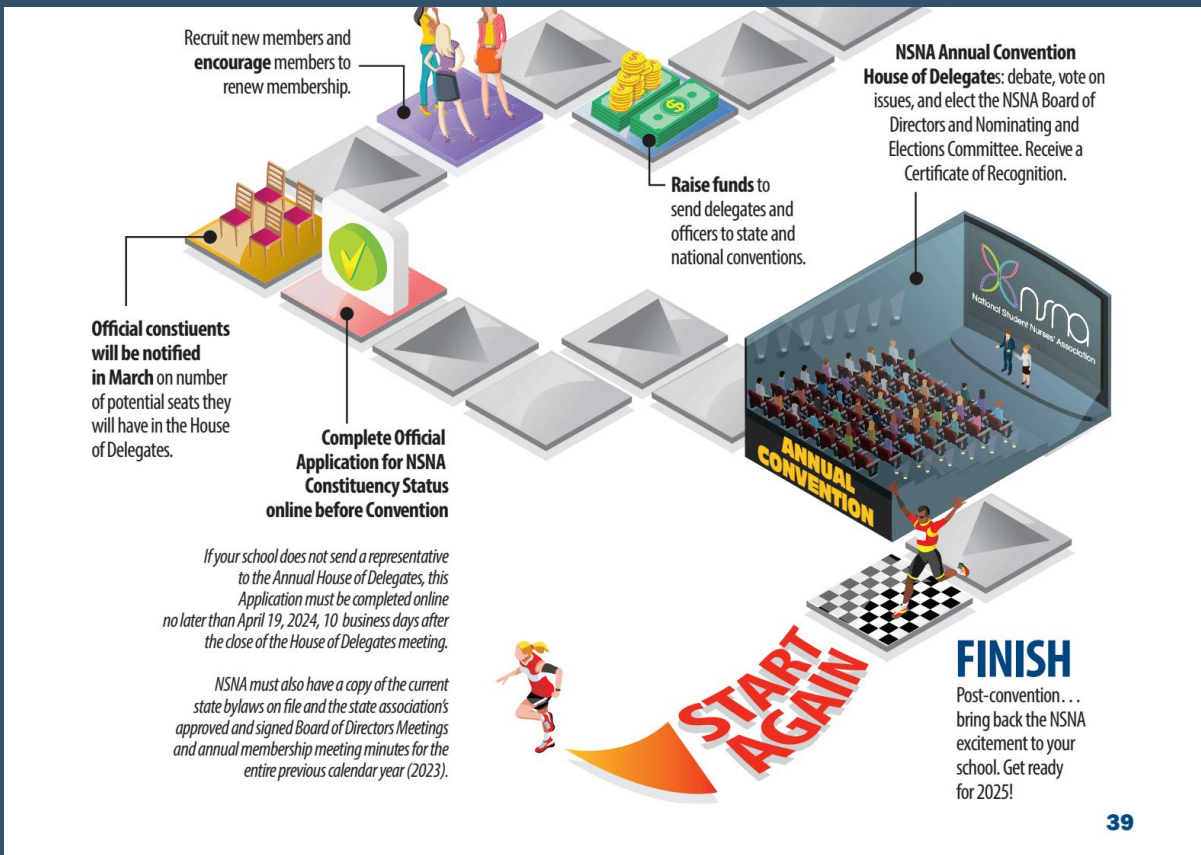
How to Begin a School Chapter

\$37 new, one year, \$40 renewal, one year \$70 two years

Recruiting members and paying for memberships:

- Connect with Faculty who have been NSNA members
- See if anyone would be interested in paying for/matching NSNA memberships (faculty, donors, etc.)
- Order and distribute physical pamphlets and/or share downloaded pamphlets/brochures
- We will come give a membership presentation at your club meeting/special webinar for your school
 - nswsboard@wsna.org

How to Begin a School Chapter



- Fundraise for club/org activities, including attending conventions as well as
 - Volunteering/Charity
 - Educational Events
 - Networking Events
- Recruit/retain to maintain minimum 10 NSNA members
- To have delegates at the annual convention, must complete official application for NSNA status
- Attend conventions/events (webinars State? national?)
 - Annual: Seattle 2025?!



How to Begin a School Chapter

What are NSNA conventions?

INVIGORATING AND
INSPIRING

- Discuss and vote on resolutions (delegates!)

FUN

- Listen, learn, and connect with world class speakers and leaders

LEARNING

- Meet nursing students from across the country

CONNECTING

GROWING

- See exhibitors - free stuff!! More networking opportunities!!



Current Member Numbers

Membership Counts:
(Active or Almost
Eligible)
As of October 31, 2023

Heritage University
- 23 NSNA Members

Pacific Lutheran
University
- 14 NSNA Members

Green River Community
College
- 3 NSNA Members

Columbia Basin College
- 6 NSNA Members

Highline Community
College
- 7 NSNA Members

Saint Martin's University
- 5 NSNA Members

Seattle Central College
- 19 NSNA Members

Skagit Valley College
- 8 NSNA Members

South Puget Sound
Community College
- 13 NSNA Members



How to Begin a School Chapter

Vital resources: <://www.nsna.org/school-chapter-resources.html>

Member pamphlets/brochures: order/download:

<https://www.nsna.org/membership-brochurepamphlet.html>

Section which details the requirements for official NSNA constituency status, 2024 (Includes bylaws requirements):

<https://www.dropbox.com/s/y9khecjjpdcfma3/NSNA%20Constituency%20Application.pdf?dl=0>

Form to apply: <https://nsna.jotform.com/72145577886168>

Checklist for State associations: Annual

<https://www.dropbox.com/s/r0xw7fh5dsa7sjo/Checklist%20for%20State%20Associations%20and%20School%20Chapters.pdf?dl=0>



Current Club Happenings

Green River College

- 3 NSNA Members

November:

- Volunteering: creating hygiene kits to donate

December:

- Giving from the Heart- Holiday tradition
- Pursuing NSNA constituency
- Building up membership among LPN-BSN students

Heritage University

- 23 NSNA Members

October:

- Breast Cancer Awareness Fundraiser
- School Outreach
- Flu Clinic

November:

- Coat Drive

December:

- Community Outreach @ Sunnyside Christmas Event

Pacific Lutheran University

- 14 NSNA Members

October:

- Raised \$6,000+ at auction dinner

November:

- Turkey Drive: box up 250+ meals for 4-6 people to distribute to the community

Spring:

- UPS Tubes + Lines: Teach OT and PT students to work w/ patients w/ tubes and lines



Chapter Organization Resources

- Meeting Minutes outline template: website
- Robert's Rule of Orders: website
- Finances: Referring to School Club policies, website



Student Member Perspectives

- Why we joined
- Green River College Nursing Organization
- LPN experience
- Building relationships with other schools
- Nursing student resources



Faculty Perspective

- Advisor vs. Consultant
 - Advisor : School Level
 - Consultant: State or National Level
- Desired Characteristics
 - Leadership Experience in Professional Nursing Organizations
 - Ability to See and Develop Gifts/Strengths in Others
 - Respect for Students As Adults and Professional Colleagues
 - Servant Leadership, Lead from the Middle or the Back
 - Knowledgeable Resource for Issues related to Nursing, Healthcare, and Nursing Education
 - Willingness to Allow Students to Fully Experience the Outcome of Their Decisions and Actions
 - Open to Learning as Much from Students as They Learn from You
- Resources for Advisors/Consultants
 - WSNA Consultants and Staff
 - NSNA Online and Human Resources
 - Other Advisors and Consultants



Giveaway Drawing!!

2x one year memberships to 2 individuals
(not yet NSNA members)



Winners Please Send:

Your Name:

Preferred Email:

Snail Mail (Residence) Address:

Mobile Phone #:

Anticipated Year of Graduation:

Birth Date:

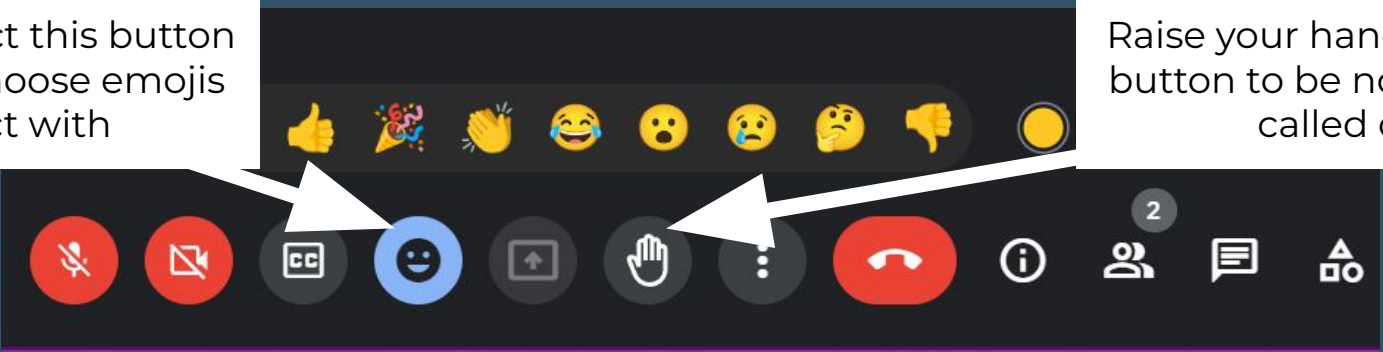
TO: **Wendy Blakely** (blakely_w@heritage.edu)



Questions and Networking!

When asking a question, please raise your digital hand!
When called on, please introduce yourself first :)
Or, you can put them in the chat!

You can select this button to be able choose emojis to react with



Raise your hand with this button to be noticed and called on

If you'd like, share your LinkedIn, personal/school website or social media, or email in the chat!

NS
WS

Final THANK YOU!



Website: nsws.org

Instagram: [@nsws_wa](https://www.instagram.com/nsws_wa)

FB: Nursing Students of
Washington State

Contact:

nswsboard@wsna.org